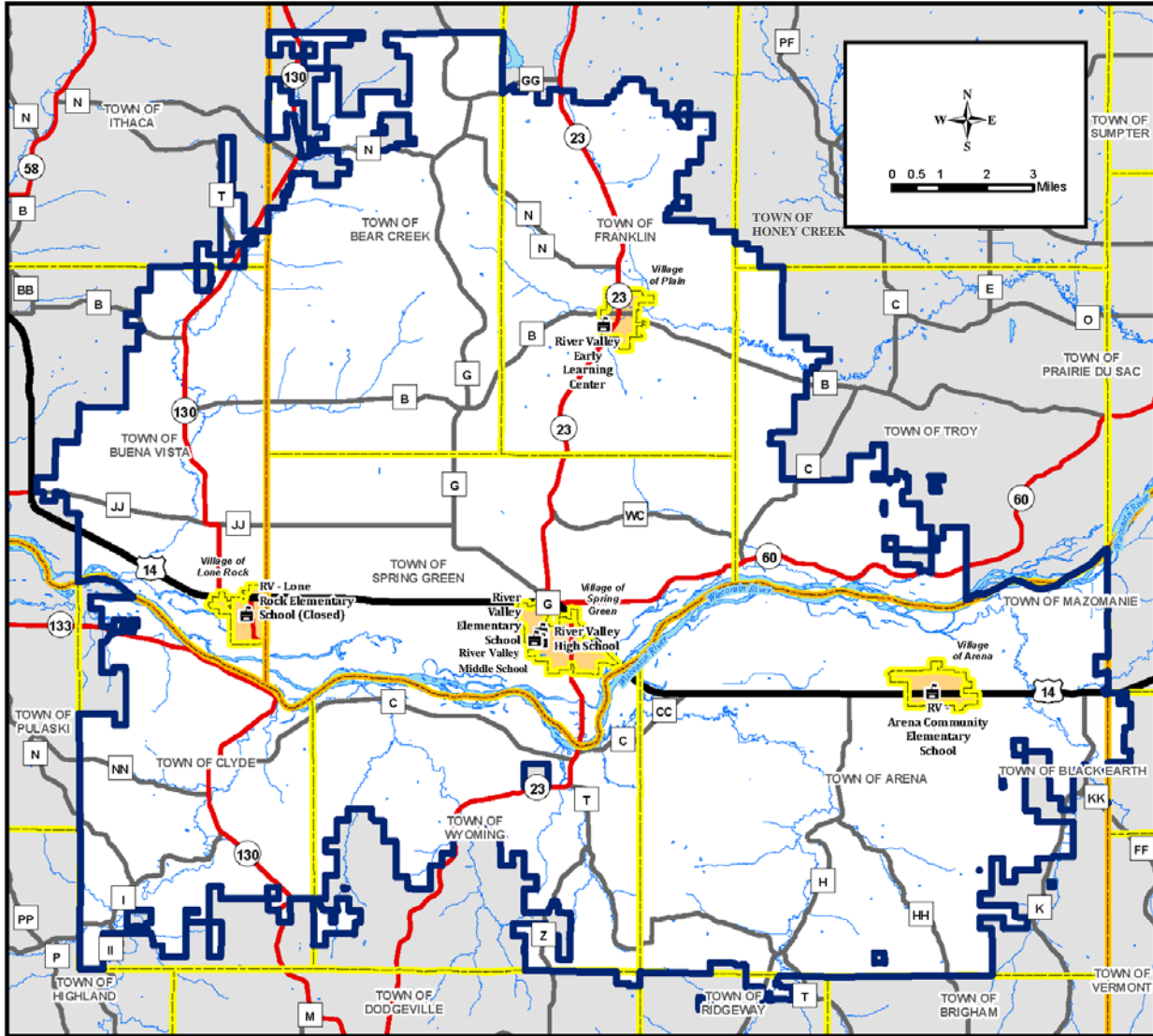




River Valley School District Strategic Plan DISTRICT AT A GLANCE



Municipalities* (w/ 2017 population)

Village of Arena	827
Village of Lone Rock	875
Village of Plain	756
Village of Spring Green	1,623
Town of Arena	1,492
Town of Bear Creek	595
Town of Buena Vista	1,894
Town of Clyde	312
Town of Franklin	651
Town of Spring Green	1,696
Town of Wyoming	302

* Parts of some of the above listed towns are not in the RVSD area. RVSD area also includes small portions of the Towns of Ridgeway, Black Earth, Ithaca, Honey Creek, Dodgeville, and Troy.

RVSD Area Facts

- RVSD covers 298 square miles
- One of largest districts by land area in State
- Average Madison area district is 80 sq. mi.
- Population density <40 persons/square mile
- Ave. Madison area district is >300/sq. mi.

Each of nine parts of the large RVSD area is represented by one School Board member

RVSD area offers a diverse mix of rural communities, natural areas, and the arts

Spring Green school campus includes 101 acres, including undeveloped land on its west end

RVSD Student Enrollment

	2010-11	2015-16	2017-18	2020-21 ²	2025-26 ²
Elementary (K-5) ¹	515	453	459	413	424
Middle (6-8)	305	307	277	264	217
High (9-12)	491	421	427	395	349
Total K-12	1,311	1,181	1,163	1,072	990

¹ District also began offering four year old kindergarten (4K) in the 2013-14 school year. Starting in the 2017-18 school year, elementary school is from grades 1 through 5, with 4K and five year old kindergarten (5K) in the Early Learning Center. The K-5 elementary grouping in this table allows comparison among all reported years.

² Reported projections represent the “baseline model” results from a 2015 study of the UW-Madison Applied Population Laboratory for the River Valley School District.

RVSD Student Offerings and Achievements

District consistently ranks in the “exceeds expectations” category in the Wisconsin Department of Public Instruction’s annual report card of districts (#47 in State in 2016-17). Report card is based mainly on student achievement, growth, closing gaps, and on-track and post-secondary success.

Students’ average ACT score in Spring 2017 ranked the District #23 of 378 Wisconsin school districts—in the top 6%.

District has offered all-day 4K programming since the 2013-14 school year—many District’s that provide 4K only provide part-time programming.

District is a leader in the use of technology as an educational tool. There is a 1-to-1 initiative to have Chromebooks in the hands of all 4th through 10th graders, which will be expanded to include 11th and 12th graders next year.

High School offers 9 advanced placement classes and 12 dual credit classes from Madison College, Southwest Technical College, and UW-Richland.

Nearly 9 out of every 10 high school students participates in at least one co-curricular activity.

Students consistently achieve at high levels in co-curricular activities, including the arts, FFA, forensics, math, mock trial, Skills USA, and sports.