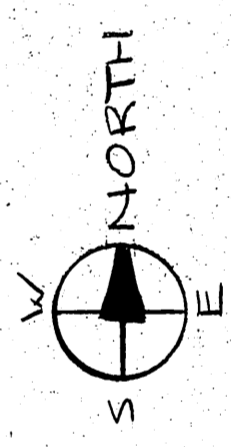
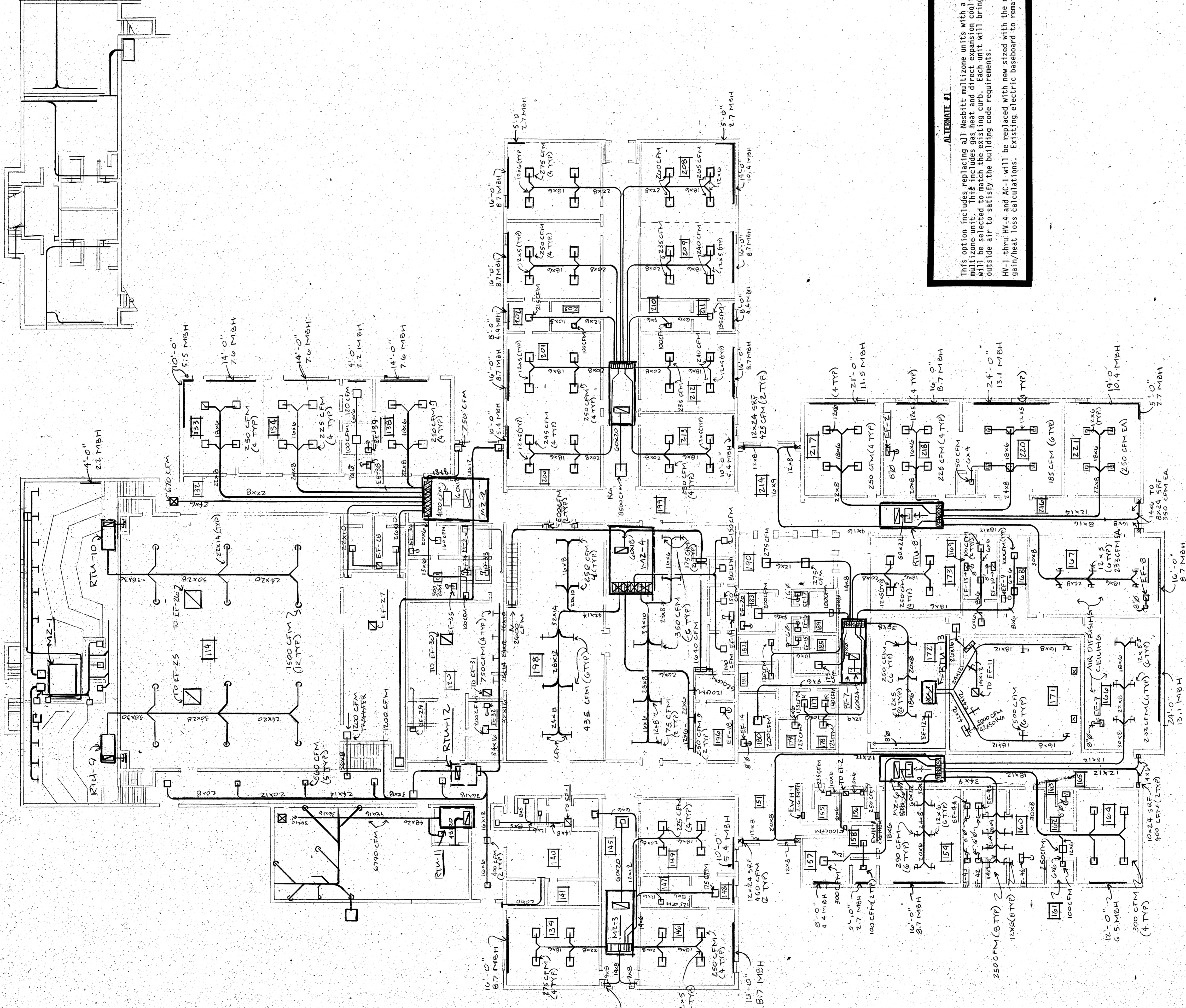


PRELIMINARY NOT FOR CONSTRUCTION

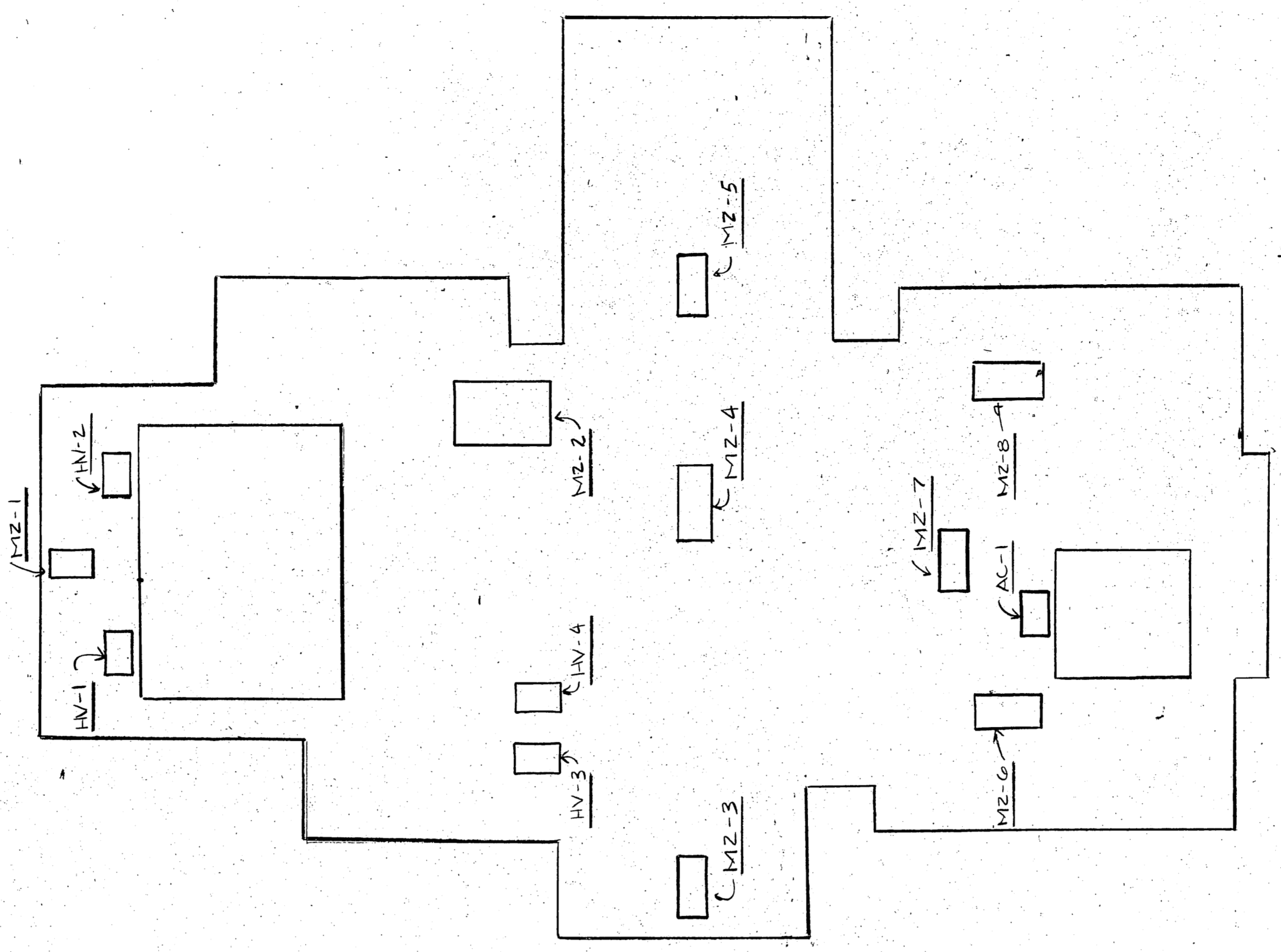


HVAC PLAN (EXISTING)
1/16" = 1'-0"



ALTERNATE #1
 This option includes replacing all Nesbitt multizone units with a Mammoth multizone unit. This includes gas heat and direct expansion cooling. Units will be electrically controlled and will be installed in the existing electric panel outside air to satisfy the building code requirements.
 RTU-1 thru RTU-4 and AC-1 will be replaced with new sized with the new heat gain/heat loss calculations. Existing electric baseboard to remain.

ROOF PLAN
1/32" = 1'-0"



SYMBOL	MANF	MODEL #	TOTAL CFM	MIN O.A. CFM	HTG. CAP.	REMARKS
MZ-1	MAMMOTH	181	5000	900	140MBH	REPLACE HVI
MZ-2	MAMMOTH	211	4200	800	120MBH	REPLACE HVI
MZ-3	MAMMOTH	240	4500	850	130MBH	REPLACE HVI
MZ-4	MAMMOTH	250	4700	900	140MBH	REPLACE HVI
MZ-5	MAMMOTH	250	4700	900	140MBH	REPLACE HVI
MZ-6	MAMMOTH	250	4700	900	140MBH	REPLACE HVI
MZ-7	MAMMOTH	250	4700	900	140MBH	REPLACE HVI
MZ-8	MAMMOTH	250	4700	900	140MBH	REPLACE HVI

SYMBOL	MANF	MODEL #	TOTAL CFM	MIN O.A. CFM	HTG. CAP.	REMARKS
RTU-9	REZNOR	RPVPAK2	4500	1450	200MBH	REPLACE HVI
RTU-10	REZNOR	RPVPAK2	4500	1450	200MBH	REPLACE HVI
RTU-11	REZNOR	RPVPAK2	4500	1450	200MBH	REPLACE HVI
RTU-12	REZNOR	RPVPAK2	4500	1450	200MBH	REPLACE HVI
RTU-13	CARRIER	48DS0007	1900	370	456MBH	REPLACE HVI

MULTIZONE ROOFTOP UNIT SCHEDULE

SYMBOL	MANF	MODEL #	TOTAL CFM	MIN O.A. CFM	HTG. CAP.	REMARKS
MZ-1	MAMMOTH	181	5000	900	140MBH	REPLACE HVI
MZ-2	MAMMOTH	211	4200	800	120MBH	REPLACE HVI
MZ-3	MAMMOTH	240	4500	850	130MBH	REPLACE HVI
MZ-4	MAMMOTH	250	4700	900	140MBH	REPLACE HVI
MZ-5	MAMMOTH	250	4700	900	140MBH	REPLACE HVI
MZ-6	MAMMOTH	250	4700	900	140MBH	REPLACE HVI
MZ-7	MAMMOTH	250	4700	900	140MBH	REPLACE HVI
MZ-8	MAMMOTH	250	4700	900	140MBH	REPLACE HVI

NOTE * UNITS WITH COOLING

ROOFTOP UNIT SCHEDULE